

- You can import data in the text (*.txt) format to your Modelbuilder model
- - This data represent polygons in tabular text format. In this way you can also enter heterogeneities templates, uneven surface & horizons etc.

13. Model export-import in text format

- ❖ Tesseract allows importing and exporting a model in the form of polygons in **three types**. They differ only in the type of separator used: space, comma, or tab.
 - 1) space delimited (file extension .txt);
 - 2) tab delimited (file extension .tab);
 - 3) comma separated (file extension .csv).

© 2011 Tesseract

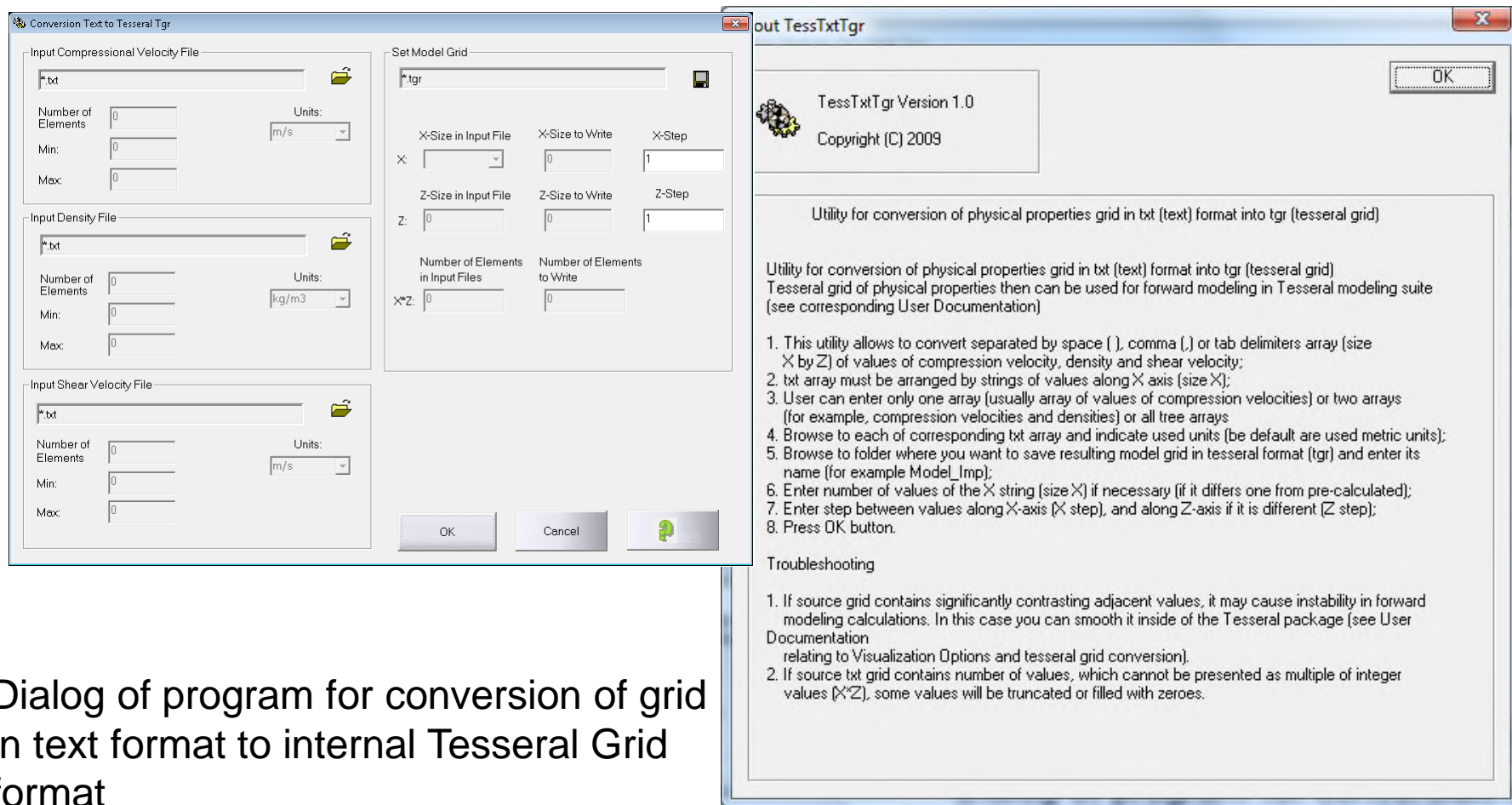
➤ The File menu; ➤ To export Model; ➤ To export name a

14. Gathers in SEG-Y format

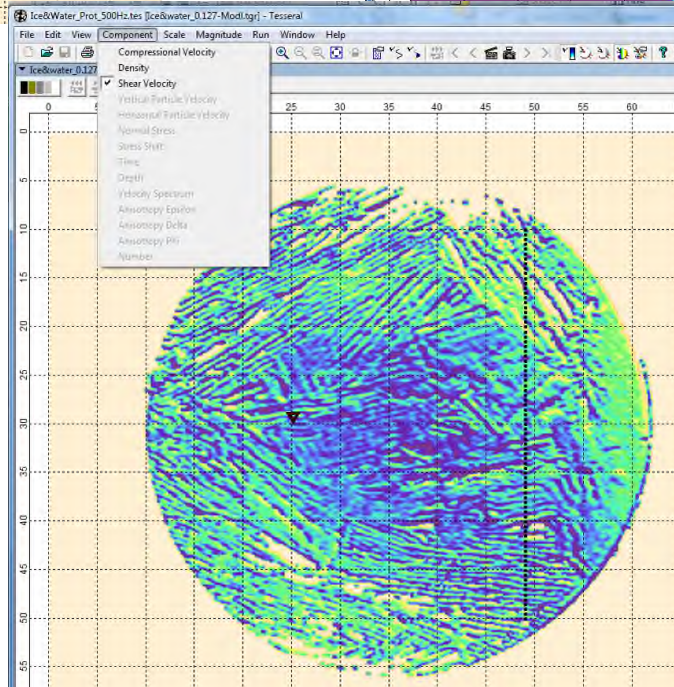
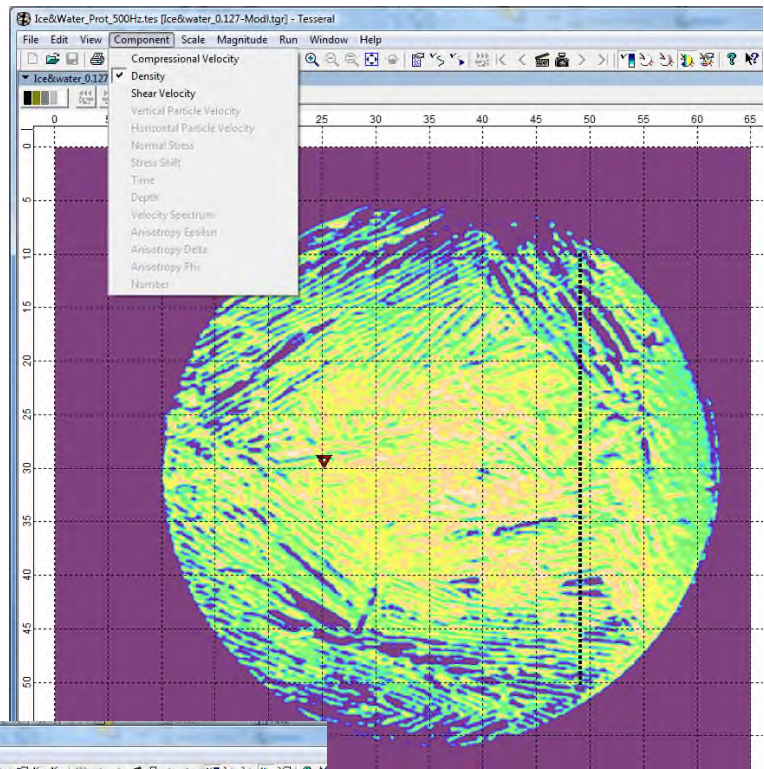
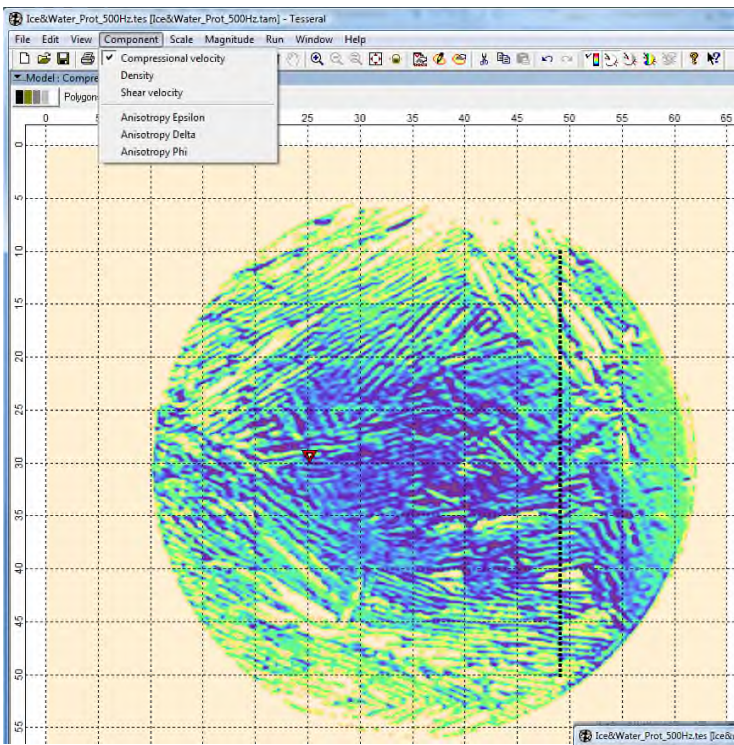
www.tesseract-geo.com

You can import data in the text (*.txt) format by converting it to the model grid (*.tgr)

- This data represent grid of particular property (Vp, Vs or Density) in a text format.



Dialog of program for conversion of grid in text format to internal Tesseral Grid format



Converted grid in
internal Tesseract Grid
format

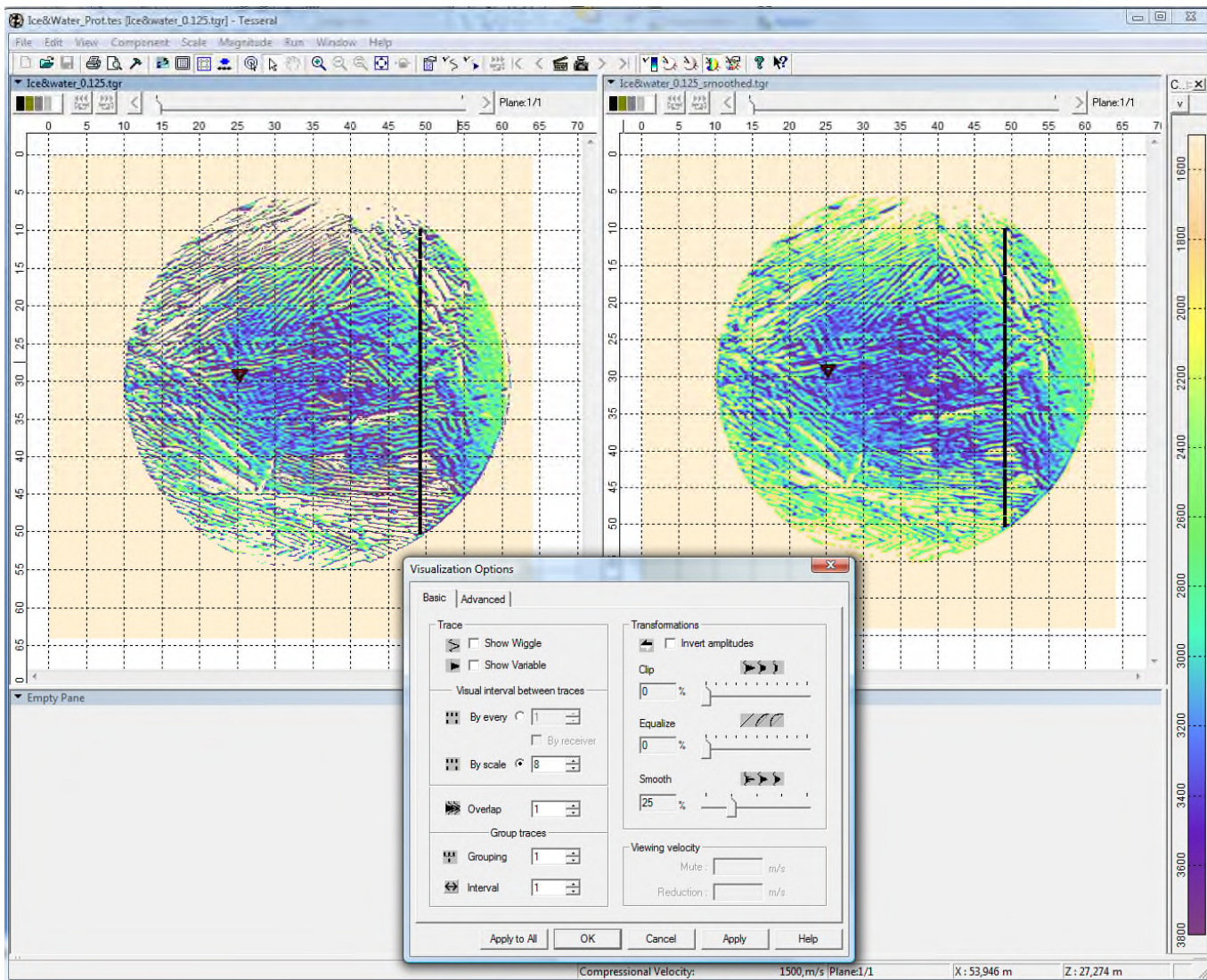
Ice&water_0.125.tgr

Scaled x1000 :

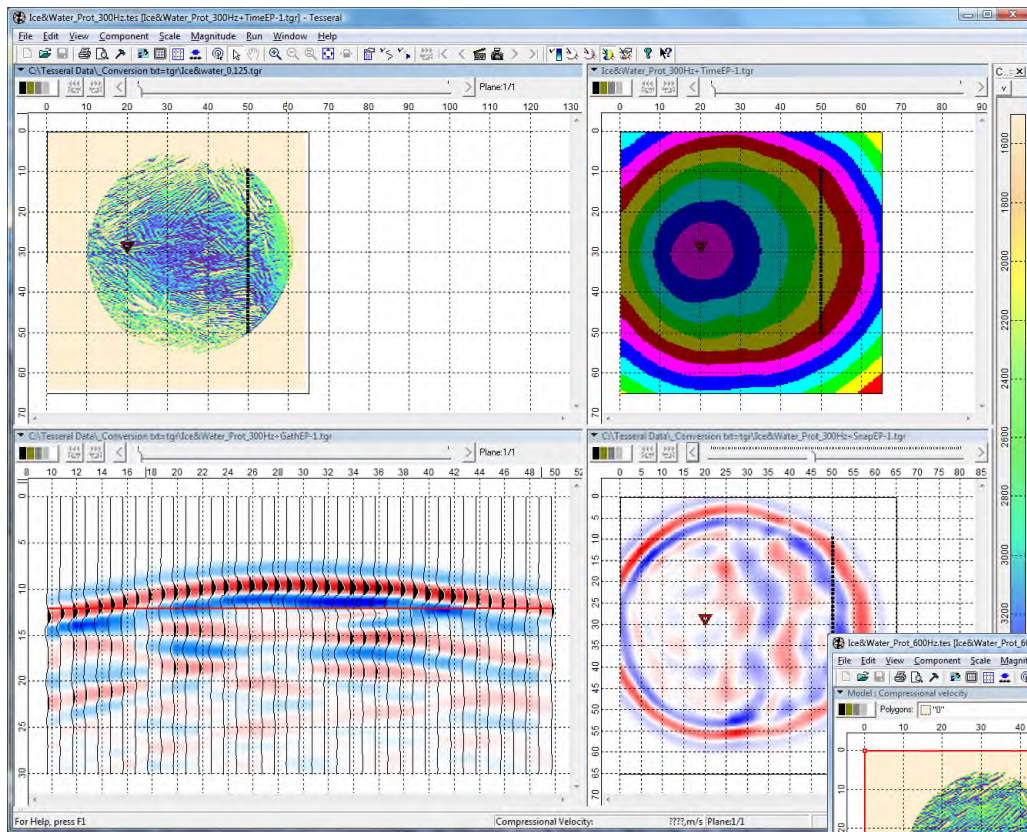
1mm = 1m ;

1Hz=1KHz,

1msec=1mcsec



Tesseral GridIce&water_0.125.tgr was too rough and caused computations instability. It was smoothed (converted for each of properties into separate smoothed grid (File->Convert to-> Complex) and then imported (File->Import Grid Model) Ice&water_0.125_smoothed.tgr.



300Hz (300 KHz)

600Hz (600 KHz)

